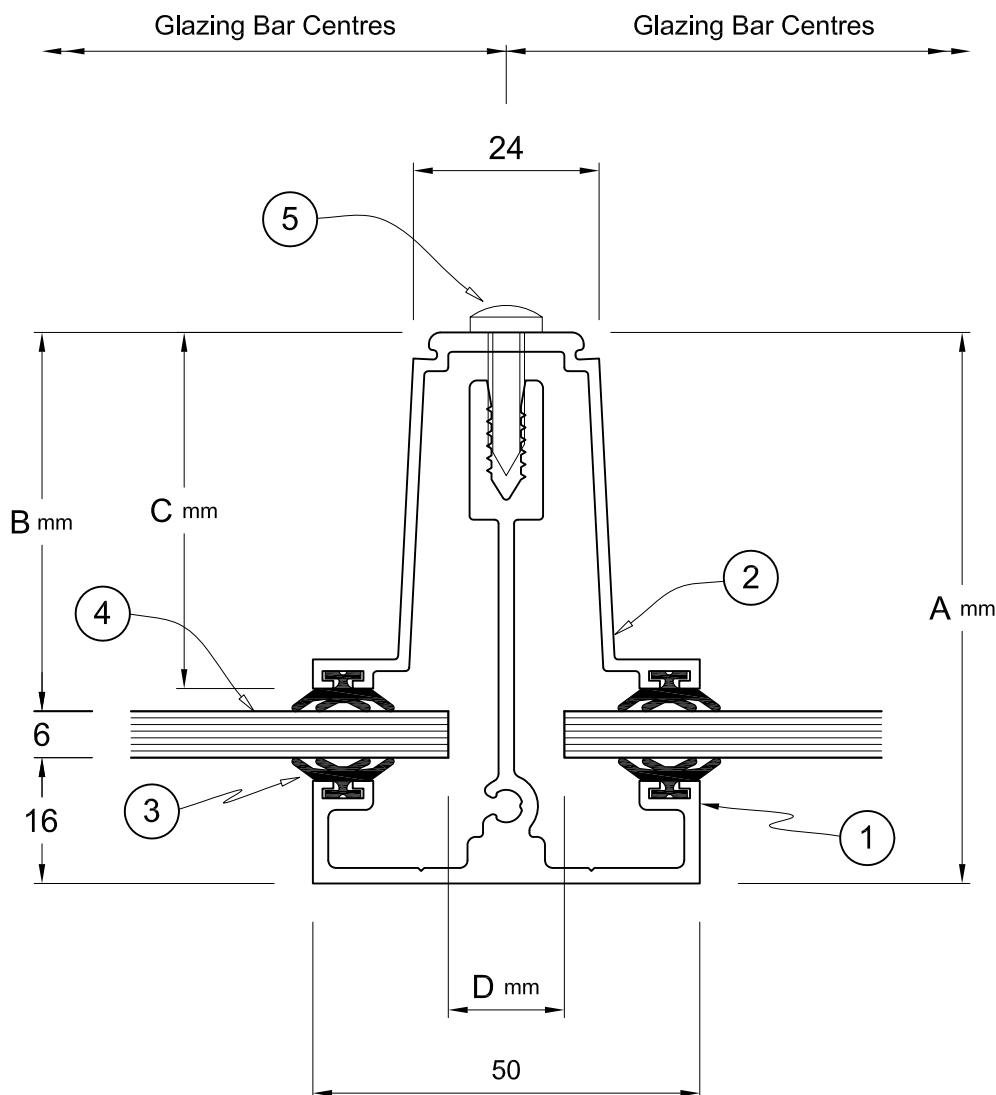


TRC Range of external stalk glazing bars are designed for canopies and unheated spaces.



Key :-

- 1 = TRC Range Glazing Bar extruded from aluminium alloy 6063-T6 to BS 1474.
- 2 = SC Range Economy Pressure Cap extruded from aluminium alloy 6063-T6 to BS 1474.
- 3 = Fin gasket extruded from Thermo Plastic Rubber to BS 7412
- 4 = Infill can accommodate all specifications of safety glass and polycarbonates between thicknesses of 4mm and 12mm
- 5 = No 10 Stainless steel Pan head self tapper to BS EN ISO 3506 grade A2

Appearance :-

Materials are available in an untreated finish (Mill). Coloured finish (Polyester Powder coated to BS 6496 to a range of RAL colours), or Anodized to BS3987.

Performance :-

This system is designed to conform to all requirements of BS 5516, 1991 when installed to all The Standard Patent Glazings recommendations and installation instructions.

Non - Fragility :-

System can conform when installed to all The Standard Patent Glazings recommendations and installation instructions to ACR[M]001 2011 class A and CWCT TN 66 - 67 2010 class 1. Please contact ourselves for further information and details.

Diagrammatic sketch of traditional aluminium glazing bar with traditional aluminium cover caps

Bar	Dimensions			Glass Deductions	Performance Data		
	A	B	C		lx-x mm	Zx-x mm ³	Span
TRC 1	71	49	46	10 - 20 (15 avg)	210,209	4,912	2,500
TRC 2	86	64	61	10 - 20 (15 avg)	393,677	7,830	3,500

Note:- Spans (distance between fixing positions) shown are indicative only depending on location, altitude, loadings height of glazing, pitch, infill thickness and bar centres. We will provide the glazing bar to suit the required conditions. Please contact ourselves for further information Spans above are based on 600mm centres with a 6mm glass infill duor pitched at 20° in a built up area.